

Land Status and Areas of Responsibility Trust Lands Mineral Ownership JUAB County, Utah



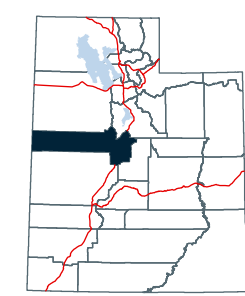
**TRUST LANDS
ADMINISTRATION**

Trust Lands Mineral Ownership

- Full Mineral
- Partial Mineral

Land Ownership and Administration

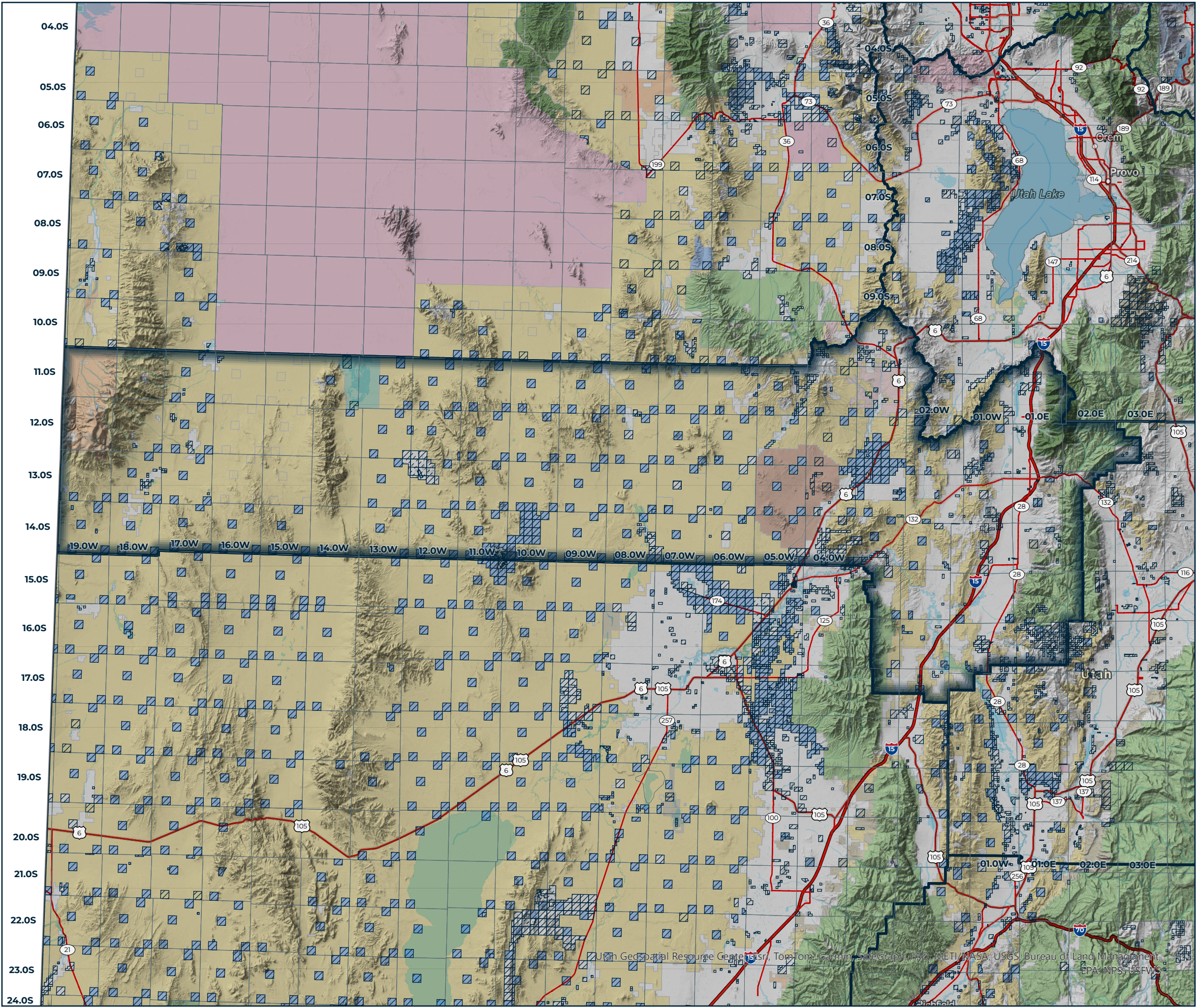
- Bureau of Land Management
- Bureau of Reclamation
- Bankhead-Jones Land Use Lands
- National Recreation Area
- National Monument
- National Forest
- National Wilderness Area
- National Wildlife Refuge
- Military Reservations and Corps of Engineers
- Private
- State Trust Lands
- State Sovereign Land
- State Parks and Recreation
- State Wildlife Reserve/Management Area
- Other State
- Tribal Lands



0 10 20 Miles

1:727,000

Data represented on this map is for REFERENCE USE ONLY and is not suitable for legal, engineering, or surveying purposes. Users of this information should review or consult the primary data and information sources to ascertain the usability of the information. The Trust Lands Administration provides this data in good faith and shall in no event be liable for any incorrect results, or any special, indirect or consequential damages to any party, arising out of or in connection with the use or the inability to use the data hereon. Land parcels, lease boundaries and associated Trust Lands Administration data layers may have been adjusted to allow for visual "best fit." The Surface Ownership Land Status data (if present) are maintained by the Trust Lands Administration to reflect current trust lands status and surface ownership. Lakes, rivers, streams, highways, roads, county and state boundaries are distributed by the Utah Geospatial Resource Center and/or other sources as specified. Contour lines (if present) were generated from USGS 10 meter DEM. Please Note: While the Trust Lands Administration seeks to verify data for accuracy and content, discrepancies may exist within the data. Acquiring the most updated Trust Lands Administration ownership GIS data may require contacting the GIS staff directly 801-538-5100 or TLA-GIS@utah.gov. The Trust Lands Administration GIS department welcomes your comments and concerns regarding the data and will attempt to resolve issues as they are brought to our attention. Produced: May 23, 2024 - katestaley



Utah Geospatial Resource Center Esri, TomTom, Garmin, SafeGraph, FAO, METI, NASA, USGS, Bureau of Land Management, EPA, NPS, USEPA