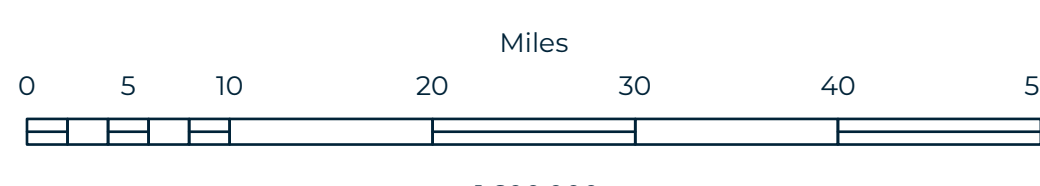
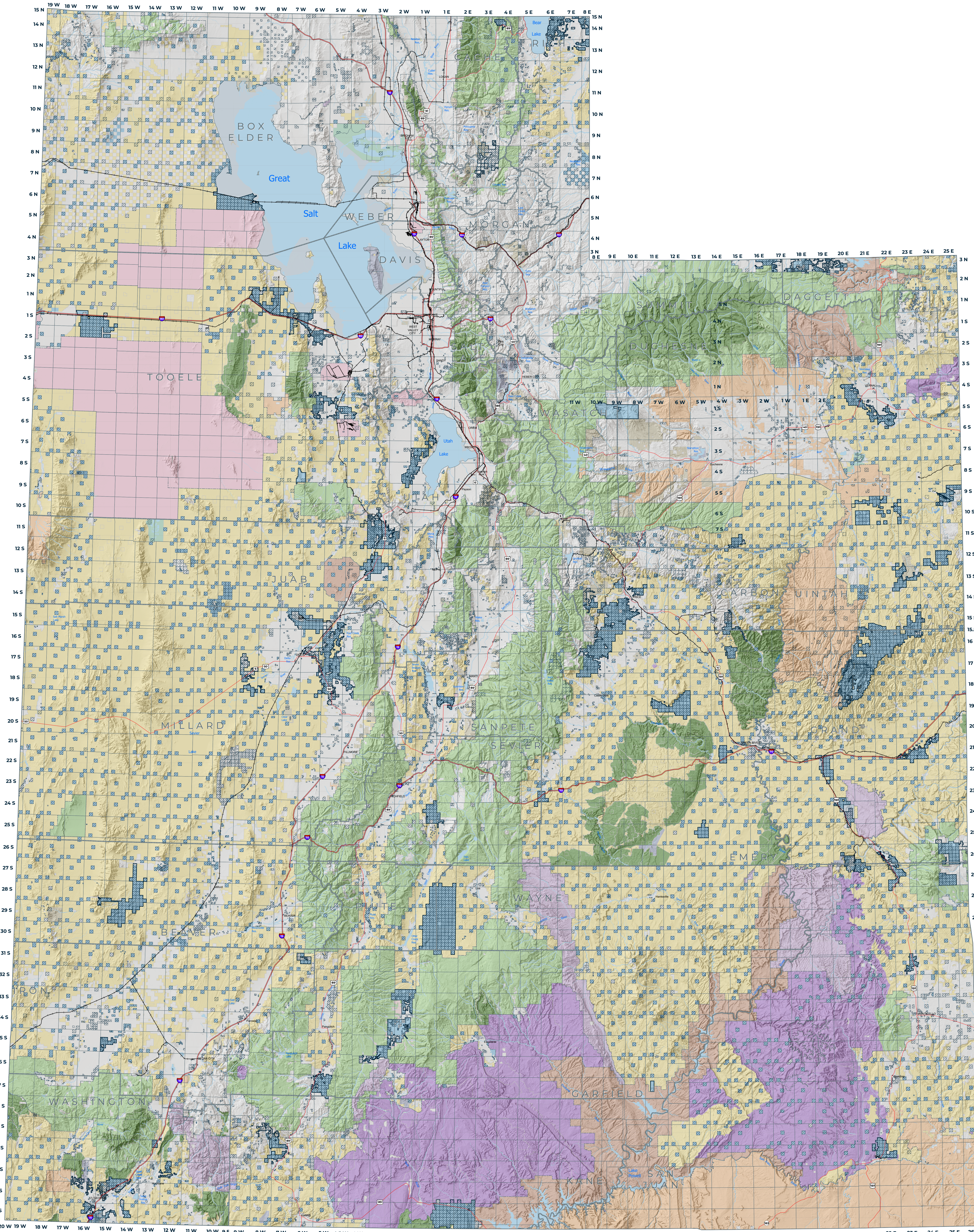


UTAH LAND STATUS AND AREAS OF RESPONSIBILITY

May 2025



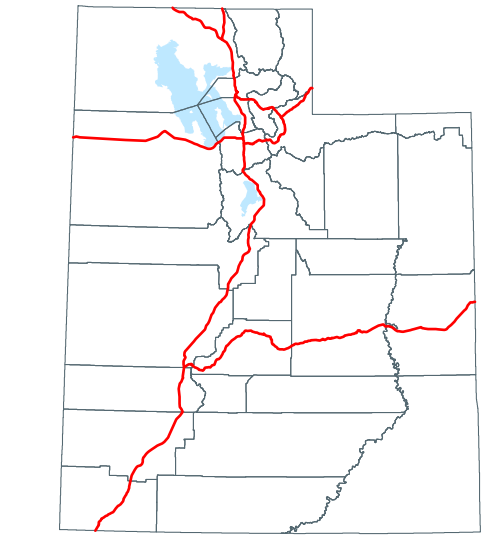
Data represented on this map is for REFERENCE USE ONLY and is not suitable for legal, engineering, or surveying purposes. Users of this information should review or consult the primary data and information sources to ascertain the validity of the information. The Trust Lands Administration provides this data in good faith and shall in no event be liable for any incorrect results, or any special, indirect or consequential damages to any party, arising out of or in connection with the use of the data herein.

Land parcels, lease boundaries and associated Trust Lands Administration data layers may have been adjusted to allow for visual "best fit". The Surface Ownership Land Status data (if present) are maintained by the Trust Lands Administration to reflect current trust lands status and surface ownership. Lakes, rivers, streams, highways, roads, county and state boundaries are distributed by the Utah Geospatial Resource Center (UGRC) under other sources as specified. Contour lines (if present) were generated from USGS 30 meter DEM.

Please Note: While the Trust Lands Administration seeks to verify data for accuracy and content, discrepancies may exist within the data. Acquiring the most accurate Trust Lands Administration ownership GIS data may require contacting the GIS staff at TLA. Disclaimer: The Trust Lands Administration is disclaiming all liability for any errors or omissions in the data and will attempt to resolve issues as they are brought to our attention.

- | | | |
|-----------------------------|-------------------------------|--|
| Trust Lands Minerals | Land Ownership | Other |
| All Mineral Rights | Bureau of Land Management | National Parks & Historic Sites; National Parks & Historic Sites |
| Partial Mineral Rights | Bureau of Reclamation | National Monument |
| | Bankhead-Jones Land Use Lands | National Forest |
| | National Recreation Area | National Wilderness Area |
| | | National Wildlife Refuge |
| | | Other Federal |
| | | Military Reservations and Corps of Engineers |
| | | Private |
| | | State Trust Lands |
| | | State Sovereign Land |
| | | State Parks and Recreation |
| | | State Wildlife Reserve/Management Area |
| | | Other State |
| | | Tribal Lands |

- | | |
|--------------------|-----------------|
| Federal Boundaries | County Boundary |
|--------------------|-----------------|



Name: Surface_Mineral_ST_Shade_36x48. Produced: May 01, 2025 SITLA. Coordinate System: NAD 1983 UTM Zone 12N.

